

# Harewood House Trust

## Access Information

### August 2026



**HAREWOOD**

Harewood is the kind of place where memories are made. It's where people come together to socialise and have fun, a place full of adventure and exploration.

**Above all, Harewood is a place where everyone is welcome.**

If you have any questions regarding access or if there is any way we can support your visit, please email [info@harewood.org](mailto:info@harewood.org) or call one of the team on **0113 218 1000**.



Accessibility Guides  
can be found on the  
AccessAble website

[accessible.co.uk](http://accessible.co.uk)

# Wheelchair Access

## Gardens and Grounds

Harewood's Gardens and Grounds were designed by Lancelot 'Capability' Brown in the 1770's to include sloping and mixed terrains. There are some areas with steep gradients, as well as cut grass, gravel and wood chip paths.

Visitors who use wheelchairs and other mobility aids are advised to bring someone to accompany them with navigating the Grounds.

## Hire all-terrain mobility scooters (Trampers)

You can now hire a Trampler when visiting Harewood. This electric all-terrain mobility scooter can travel over rough ground, making more areas of the Gardens and Grounds accessible to more people.

These should be pre-booked on the [Outdoor Mobility website](#) and collected from Visitor Information in the Courtyard.

## Harewood House

We have two wheelchair lifts to allow users to access the State Floor and Below Stairs. These can comfortably accommodate standard wheelchairs and smaller motorised electric scooters.

The State Floor is wheelchair accessible via the wheelchair lift at the front of the House. There is a weight limit capacity of 300kg, with a step ramp capacity of 200kg.

## Step free access to the Servants' Hall

Step-free access is available via the Terrace, though please note the surface is gravelled.

To reach the Servants' Hall, head to the back of the Terrace Café, where you'll find a door on the left hand side. This leads through the Servants' Corridors Below Stairs to the Servants' Hall Family Space.

A ramp is available for navigating the steps into the Servants' Hall. A Harewood team member will be on hand to assist with setting up and securing the ramp for your safety.

If you need further assistance, please don't hesitate to ask a member of our team.

## Wheelchair Hire

We have five manual wheelchairs available to hire on a first come first service basis. The three available in the House are indoor wheelchairs and are not for use in the Grounds. Please call our Visitor Information team if you require one for your visit.





## EnChroma Glasses

### Red-Green Colour Blind Visitors

If you're red-green colour blind, you can reserve a pair of EnChroma glasses for colour blindness and experience the vibrant colours of Harewood like never before.

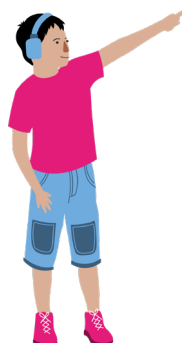
EnChroma's patented lenses are engineered with special optical filters that enable colour blind people to see a broader range of colours more clearly, vibrantly and distinctly so they can experience colourful art, the beauty of nature, overcome everyday challenges and better understand and appreciate colours.

## Sensory Backpacks

We have 10 sensory backpacks for children and 10 for adults to encourage, support, and enhance the museum experience of our visitors who may experience sensory overload whilst visiting the House. These packs are free to use and are located at the desk in Entrance Hall.

Inside the Sensory Bags, you will find ear defenders, a torch, sensory and fidget toys.

You can ask for one from any of our friendly staff and they will happily lend it to you for the duration of your visit.



## Carers

We offer free admission to carers who are visiting with the person they care for, this includes Christmas at Harewood.

A carer of a paying disabled visitor is entitled to complimentary admission to Harewood House, Gardens and Grounds during our general public opening hours.

The cost of access companion tickets will be deducted at checkout when purchasing a full price adult ticket.

Please note, this does not apply to any of our experiences such as Private Apartment Tours and workshops or special events such as Dining in the Gallery.

**If you have any questions about admission for carers, please contact [info@harewood.org](mailto:info@harewood.org) or call 0113 218 1000.**



# Harewood staff are here to help

## Shuttle Bus

Harewood offers a free mobility assistance shuttle service which is led by a team of volunteers.

The shuttles are wheelchair, pram and pushchair accessible and provide drop offs to the Main Entrance, House, Church, Courtyard, Car Park and Lakeside.

Please note that as this service is run by volunteers we cannot guarantee that it will be running every day.

**If you require mobility support during your visit, please speak to our Visitor Information team in the Courtyard, or call us on 0113 218 1000.**



## Guide Dogs UK

Our Visitor Experience Leaders have also undertaken sighted assistant training with Guide Dogs UK.

## VocalEyes

We understand that there's always more we can do to ensure every visitor has the best experience possible. Recently, we've taken an important step by partnering with VocalEyes for training, allowing us to identify and remove barriers to access and inclusion for blind and partially sighted visitors.

This training is part of our ongoing commitment to creating a welcoming environment for everyone.

## Dementia friendly

Harewood is proud to have over 50 Visitor Experience staff and volunteers who are Dementia Friends. Look out for us wearing our blue forget-me-not pin badges.

## Hidden disabilities sunflower scheme

Not all disabilities are visible. If you have a hidden disability and feel that you would benefit from wearing a Hidden Disabilities Sunflower product while on-site, please pick one up from Visitor Reception on arrival, or Visitor Information in the Courtyard.





If you have any questions regarding access or if there is any way we can support your visit, please email our visitor information team at [info@harewood.org](mailto:info@harewood.org) or call 0113 218 1000



Registered Charity no 517753

**harewood.org**  
+44 (0)113 218 1010  
[info@harewood.org](mailto:info@harewood.org)

Harewood House Trust  
Harewood House, Harewood  
Leeds LS17 9LG